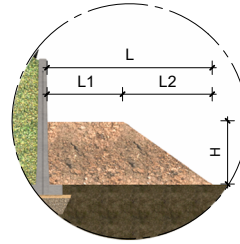
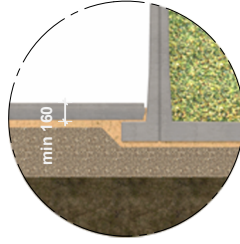
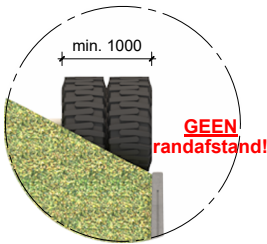
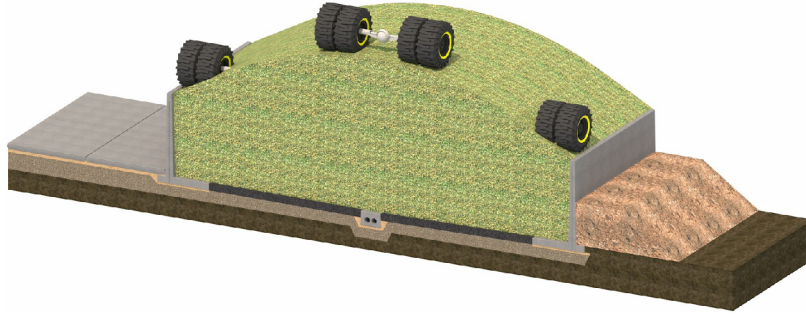


# TOEPASSINGSMOGELIJKHEDEN

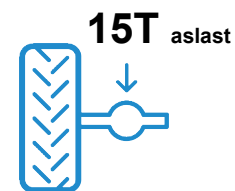
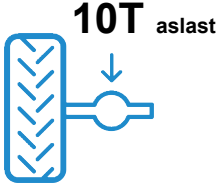
## L-keerwanden met hak (agrarisch)



### Aanvulling vrijstaand

### Aanvulling grondwal

	Onverhard	Verhard	L	L1	L2	H
<b>L100hak</b>	200mm over hak	160mm tot bk hak	Geen eis			
<b>L125hak</b>	300mm over hak	160mm tot bk hak	Geen eis			
<b>L150hak</b>	300mm over hak	160mm tot bk hak	Geen eis			
<b>L175hak</b>	350mm over hak	160mm tot bk hak	Geen eis			
<b>L200hak</b>	350mm over hak	160mm tot bk hak	Geen eis			
<b>L225hak</b>	350mm over hak	160mm tot bk hak	Geen eis			
<b>L250hak</b>	400mm over hak	160mm tot bk hak	Geen eis			
<b>L300hak</b>	450mm over hak	160mm tot bk hak	Geen eis			
<b>L350hak</b>	550mm over hak	160mm over hak	Geen eis			
<b>L400hak</b>	600mm over hak	160mm over hak	Geen eis			
<b>L100hak</b>	N.V.T.		2200mm	1500mm	700mm	500mm
<b>L125hak</b>			2400mm	1500mm	900mm	625mm
<b>L150hak</b>			2600mm	1500mm	1100mm	750mm
<b>L175hak</b>			2750mm	1500mm	1250mm	875mm
<b>L200hak</b>			3070mm	1500mm	1570mm	1000mm
<b>L225hak</b>			3270mm	1500mm	1770mm	1125mm
<b>L250hak</b>			3460mm	1500mm	1960mm	1250mm
<b>L300hak</b>			3850mm	1500mm	2350mm	1500mm
<b>L350hak</b>			4250mm	1500mm	2500mm	1750mm
<b>L400hak</b>			4650mm	1500mm	3150mm	2000mm



### Afwijkende toepassing/belastingen op aanvraag

<p>Max. <b>28°</b></p>	<p>Max. silage height panel height + 0.5m</p>	<p>Dry matter content</p> <p>min. <b>33%</b></p> <p>min. <b>25%</b></p>	<p>Store silage at max. 800kg per m<sup>3</sup></p> <p>D: Füllgutklassen 1 u. 2a nach DIN 11622-2</p>	<p>This silage clamp complies with:</p> <ul style="list-style-type: none"> <li>BS 5502-22 Agricultural building and structures</li> <li>BRL 2812 Agricultural concrete products</li> <li>BS EN 13369 Precast concrete products</li> </ul>
------------------------	---	---	---	---